

TRAFFIC MANAGEMENT PLAN

4 RADAR STREET, PORT OF BRISBANE

WAREHOUSE

- All trucks/deliveries to enter site via entry driveway.
- Drivers to travel along rear of warehouse, in the transit lane (no travel to the left of the solid red line – this is the reach stacker operation area), at **8km/hr** and proceed to pull up point as directed by warehouse staff.
- All drivers are to remain in their vehicle until instructed otherwise by a site representative. All loads are to remain secured until in place in the correct area for loading/unloading.
- All drivers are to be in clear vision of loaders at all times while loading/unloading takes place. (**Loading to cease if driver is not visible**)
- Drivers only allowed in loading area if assisting loaders. 3 metre separation must be always maintained between forklifts and pedestrians at all times.
- Drivers will secure load and collect paperwork/ signed PDA before leaving site.
- Warehouse staff are to make sure all loads are secured correctly before vehicles leave site.

HARD STAND

- All trucks are to enter site via the entry driveway.
- Drivers to travel along rear of warehouse, in the transit lane (no travel to the left of the solid red line – this is the reach stacker operation area), at **8km/hr** and proceed to pull up point as directed by reach stacker operator. At this point twist locks can be disengaged when advised to proceed by the reach stacker operator.
- Drivers are to remain in their vehicle/or office area whilst loaded/unloaded by reach stacker. There is absolutely no pedestrian activity allowed within 10 meters whilst the reach stacker is loading/unloading a vehicle. When loading/unloading is completed, twist locks can be applied as directed by the reach stacker operator. Reach stacker must be stationary.

SITE

- 8km/hr speed limit
- Watch for moving vehicles, plant and pedestrians when driving around corners and difficult-to-see areas. Maintain separation of at least 3 metres between forklifts and pedestrians.
- All vehicles use the entry gate, vehicles and trucks for the yard and warehouse are to proceed straight to the stop sign beside warehouse (notifying arrival via UHF) and all cars for the office area, turn right after the entry gate for the car park
- Site required PPE to be worn in all yard and warehouse areas which includes high vis vest or clothing and enclosed footwear.

www.teamtransport.com.au

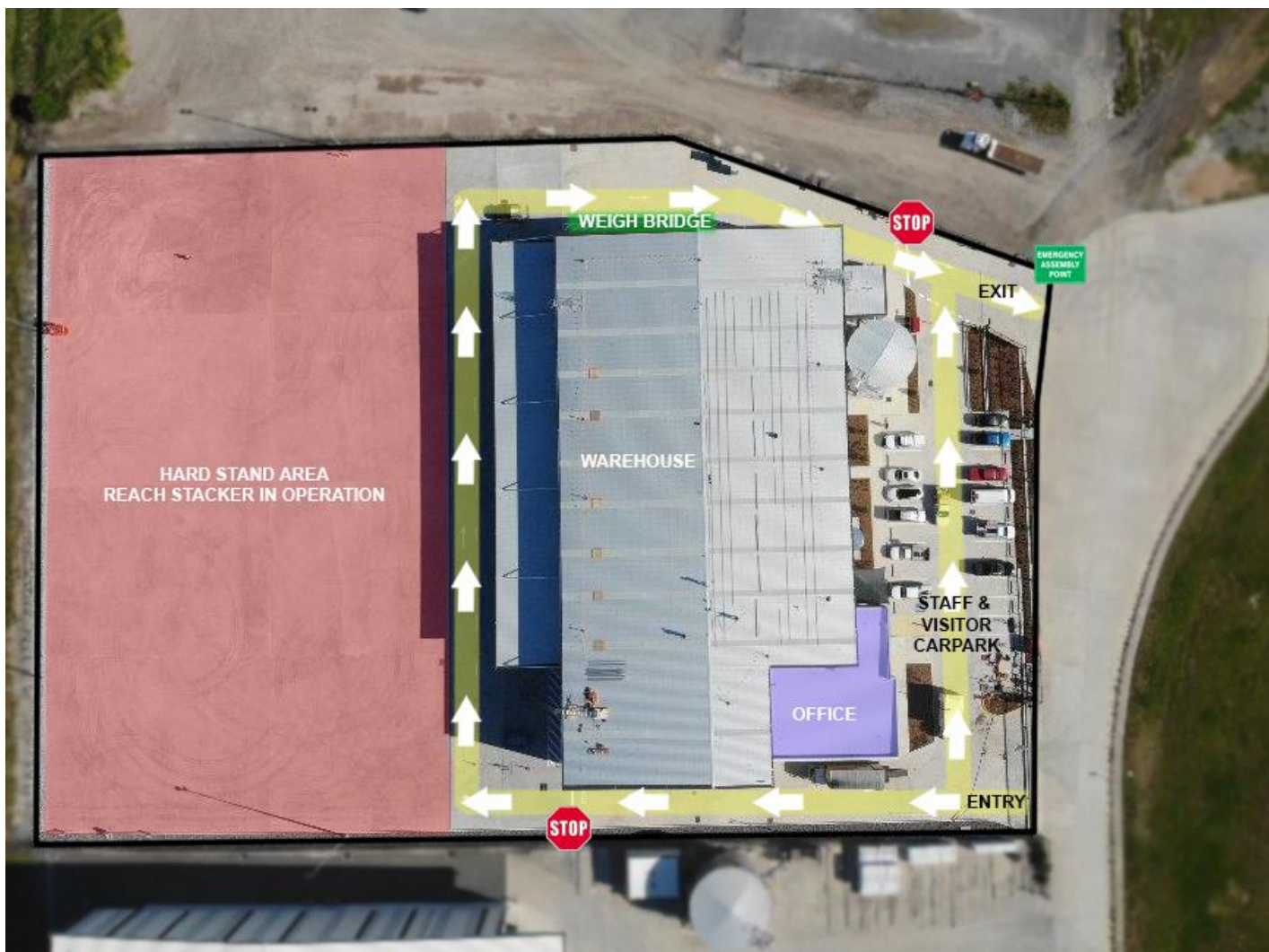
34 Iris Place Acacia Ridge Q 4110

P.O Box 233 Acacia Ridge Q 4110

Phone 1300 138 326 Fax 1300 793 457

email@teamtransport.com.au A.B.N 16 334 296 903

- All pedestrians accessing the hardstand must have a UHF radio or be with someone with a UHF radio. There is absolutely no pedestrian hard stand access beyond the solid red line whilst the reach stacker is in operation.
- Where the reach stacker is operating outside of its normal area (for example positioning containers for unpack near warehouse), further exclusion zones to pedestrian activity will be indicated and must be adhered to.



www.teamtransport.com.au

34 Iris Place Acacia Ridge Q 4110

P.O Box 233 Acacia Ridge Q 4110

Phone 1300 138 326 Fax 1300 793 457

email@teamtransport.com.au A.B.N 16 334 296 903